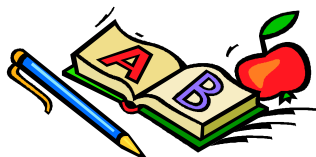


# BVCS Early Childhood Iowa

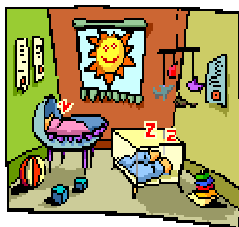
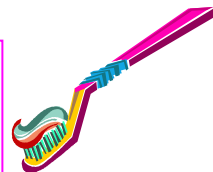
Buena Vista, Crawford & Sac Counties  
Annette Koster, Program Director,  
116 South State Street PO Box 204  
Sac City, IA 50583  
Phone: 712-662-3880, email: akosterbvcs@frontiernet.net,  
Website address bvcsempowerment.com



86.27% of children receiving *Preschool Scholarships* demonstrated age appropriate skills.

95.90% of days that children who received *Transportation Support* attended preschool.

*Oral Health Projects* reported - 93% of children screened for dental decay were cavity free. 67% of children who needed dental treatment actually went to a dentist.

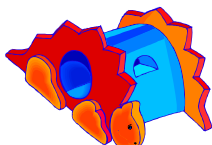
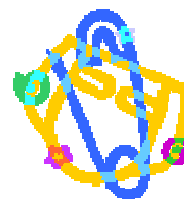


*The Child Care Consultant* reported – In Buena Vista, Crawford & Sac Counties 92% increased or maintained in the number of registered child development homes/centers and 85% increased or maintained in the number of child care slots in regulated child (registered/licensed). 59% of child care environments served incorporate developmentally appropriate activities to create an improved learning environment.



94% of early education environments reported being able to retain ratings/certifications/credentialing/and or renewals that were a direct result from the *Provider Development* training offered.

*Child Care Nurse Consultants* reported - 93% of children with special health care needs with a special needs care plan in place at the child care facility. 62% of the early care and education providers received onsite assessment and consultation that improved their health and safety conditions.



Of the 21 programs that participated in the *Outdoor Playground Environment Improvement Opportunity 6* (29%) have improved or maintained at the highest level following the program in Fiscal Year 2012.

*Family STEPS* reports- 90% of participating families improved or maintained healthy functioning, problem solving and communication. 61% increased or maintained social supports. 64% are connected to additional concrete supports. 49% of the families increased knowledge about child development and parenting. And 46% improved nurturing and attachment between parent/s and child and or children.



# BVCS Early Childhood Iowa

Our Mission: *To improve the quality to life for children and families by strongly supporting safe environments lifelong, learning and facilitating a coordinated system for community services.*

## Why are the programs we support important to our Mission, Vision and Community Plan?

*Preschool Scholarships/Transportation/Support* – Community Plan Priority -Allowing children access to quality preschool programs:

Research shows that 3 - and - 4 year olds who attend a high quality preschool are more successful in Kindergarten and beyond – both academically and socially.

Reference: <http://nieer.org/resources/policybriefs/1.pdf>

*Oral Health Projects* – Community Plan Priority -Health preventative measure:

A child with cavities and a painful mouth can lose focus while learning new skills at school and at home. They may also have difficulty eating food, which helps their bodies to grow. A child with a healthy mouth will have more confidence when speaking, eating, and smiling with others.

Reference: <http://www.idph.state.ia.us/OHDS/>

*Child Care Consultant* – Community Plan Priority - Nurturing home, center and early learning environments:

As our youngest citizens grow, it is everyone's job to ensure they do so in a quality care environment. Research shows that children in quality child care environments enter school ready to learn, are more successful in school and helps ensure a future quality workforce.

Reference: [http://iowaccrr.org/employers\\_communities/community\\_partnerships/](http://iowaccrr.org/employers_communities/community_partnerships/)

*Provider Development* - Community Plan Priority - Nurturing home, center and early learning environments:

Research and common sense indicate that the expertise needed to provide a nurturing environment for young children is acquired through specialized professional development - training, education and technical assistance that begins with entry into the field and continues throughout each individual career.

Reference: <http://www.cdacouncil.org/the-resource-center/cda-and-naeyc-standards-relationship>

*Child Care Nurse Consultant/Playground Improvement Opportunity* - Community Plan Priority - Nurturing home, center & early learning environments:

After observing 220 child care settings across the United States, CPSC staff found that most of these settings (two-thirds) had at least one of the safety hazards targeted in this study. That means that children in these settings may be at risk of injury or death.

Reference: <http://www.cpsc.gov/library/ccstudy.html>.

*Family STEPS Home Visitation Program* – Community Plan Priority -Families participating in home visitation & parent education programs

Parents have the greatest impact on their child's development and success, but many need support in learning how to nurture and teach their child. Every day children learn about life and who they are through interactions with and observations of their parents and other primary caregivers. Effective home visiting offers family support that recognizes and respects the special role that parents play in shaping the lives of their children.

Reference: <http://www.state.ia.us/earlychildhood/docs/FamilySupportIssueBrief4.pdf>

Our Vision: Every child at birth will be healthy and successful