

Vision: Every child beginning at birth will be healthy and successful.



BVCS Early Childhood Iowa
Serving Buena Vista, Crawford, & Sac Counties
Annette Koster, Program Director
116 South State Street, Suite 4 PO Box 204
Sac City, IA 50583

Phone: 712-662-3880
Email: akosterbvcs@frontiernet.net
Website: www.bvcsempowerment.com

Mission: To improve the quality of life for children and families by strongly supporting safe environments, lifelong learning and facilitating a coordinated system for community services.

Why are the programs we support important to reaching our vision and mission?

- They improve outcomes for child well-being and family stability.
- Support for growth in the first five years will result in school success and later contribution to society. Without support during early years, a child will be highly likely to drop out of school, receive welfare benefits and commit crime.
- Prioritizes quality standards and evidenced-based/ promising practice programs with proven results.

What can you do to help?

- Ask your elected officials to prioritize services to children.
- Volunteer at and/or donate to a program serving children and their families.
- Share this information with others.
- Contact BVCS Early Childhood Iowa to get involved.

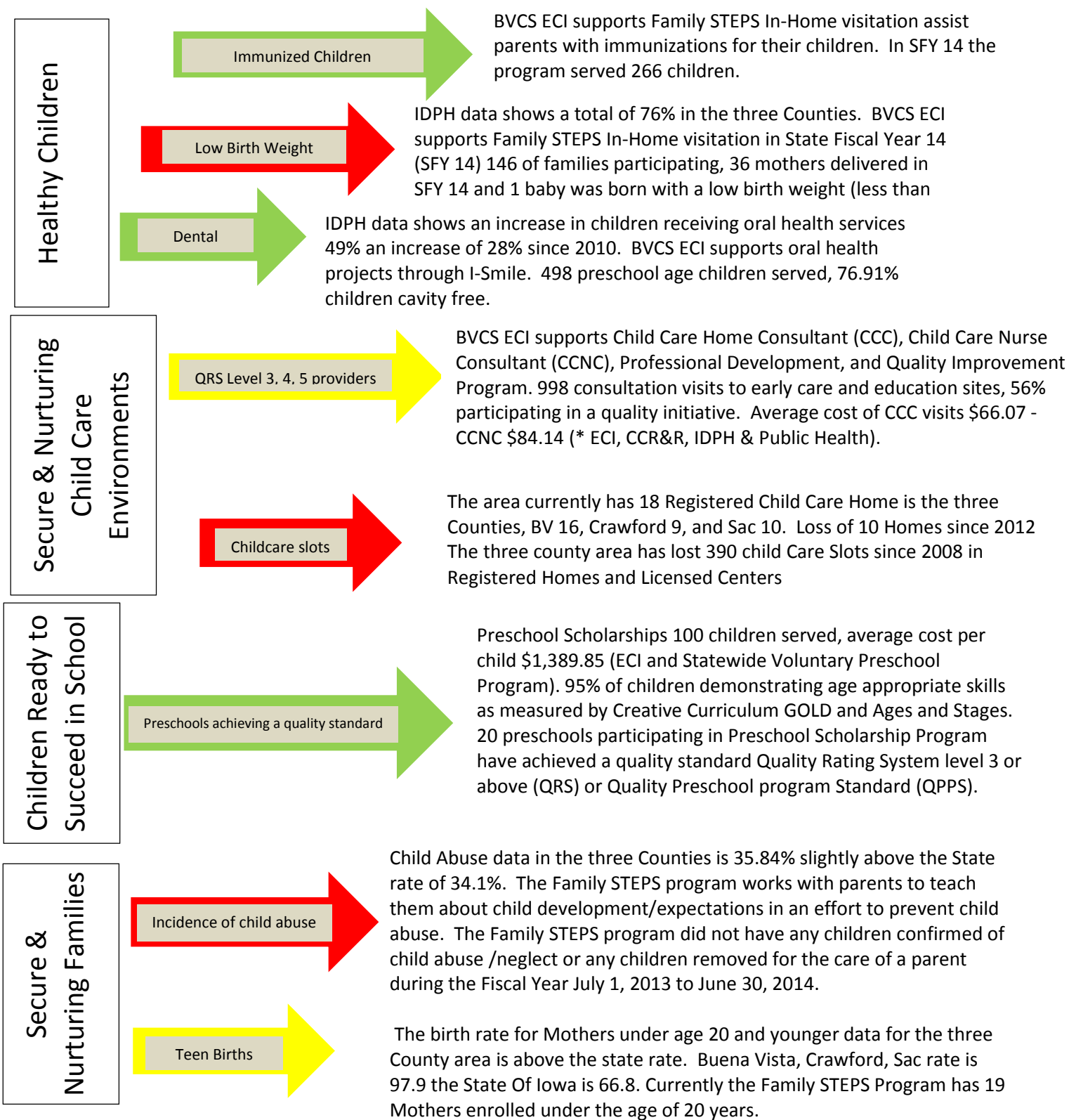
SERVICES/PROGRAMS/ACTIVITIES WE SUPPORT

- Family Support In-Home-Visitation 0 – 5 years
- Preschool Scholarship/Support
- Consultation Services for Early Care Environments
- Oral Health - Screenings, Varnish, & Education
- Early Care & Education Provider Development
- Quality Improvement Grants
- BVCS EC Program Coordination



Did you know? Economic experts say mounting evidence shows that investments in early care and education should be considered as an economic development strategy. A recent longitudinal study found that a return to society of more than **\$17** for every \$1 invested in an early care and education program! For more information, visit:

www.highscope.org/Research/PerryProject/PerryAge40SumWeb.pdf



Color around the arrows translates how the BVCS ECI area has or has not met the indicators established by the BVCS ECI 3-County Board: Red, goals not meet, Yellow, making progress toward goal, Green, goal met. Indicators are located in the BVCS Early Childhood Iowa Community Plan.

The complete BVCS Early Childhood Iowa area Annual report can be found at: bvcsempowerment.com
 The complete Early Childhood Iowa State Annual Report can be found at: <http://www.earlychildhoodiowa.org>