



## BVCS Early Childhood Iowa

Second Quarter Report

---

---

---

---

---

---

---

---

### Child Care Nurse Consultant (CCNC)

1 <sup>st</sup> Quarter # On Site Visits	2 <sup>nd</sup> Quarter # On Site Visits	3 <sup>rd</sup> Quarter # On Site Visits	4 <sup>th</sup> Quarter # On Site Visits
• July - Sept • 24	• Oct - Dec • 37	• Jan-March	• April-June
Year to Date Crawford		Year to Date BV & Sac	
25		36	

---

---

---

---

---

---

---

---

### Child Care Nurse Consultant (CCNC)

1 <sup>st</sup> Quarter # TA Contacts	2 <sup>nd</sup> Quarter # TA Contacts	3 <sup>rd</sup> Quarter TA Contacts	4 <sup>th</sup> Quarter TA Contact
July- Sept 16	Oct-Dec 8	Jan- March	April-June
Year to Date			
24			

TA = Technical Assistance

---

---

---

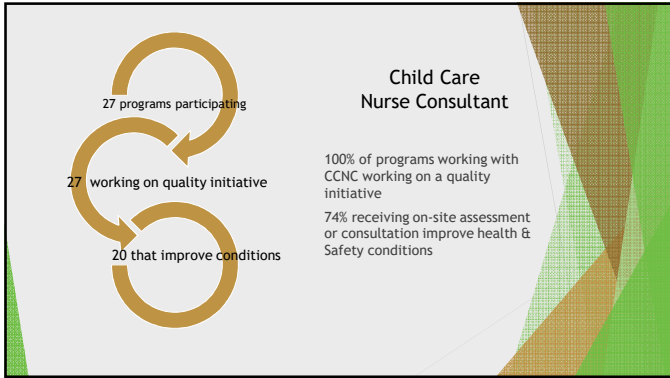
---

---

---

---

---




---

---

---

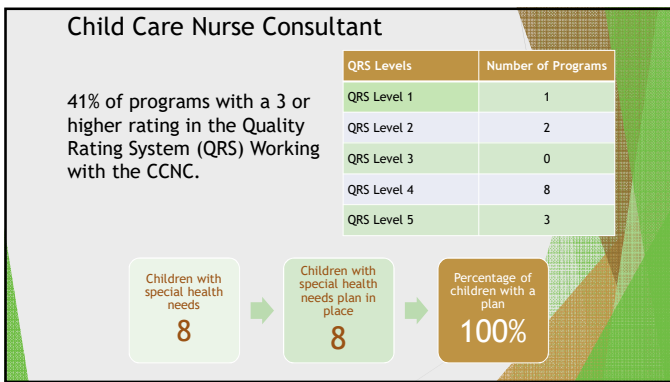
---

---

---

---

---




---

---

---

---

---

---

---

---




---

---

---

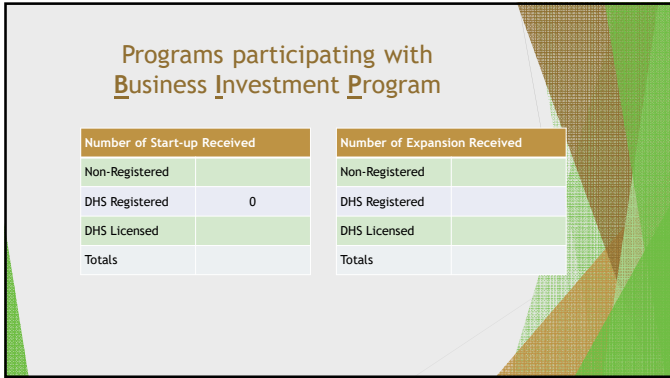
---

---

---

---

---




---

---

---

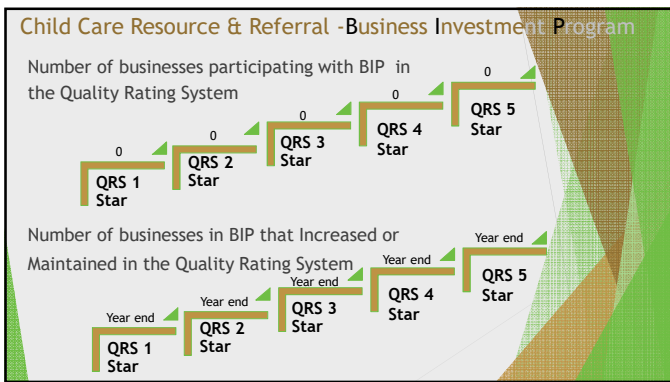
---

---

---

---

---




---

---

---

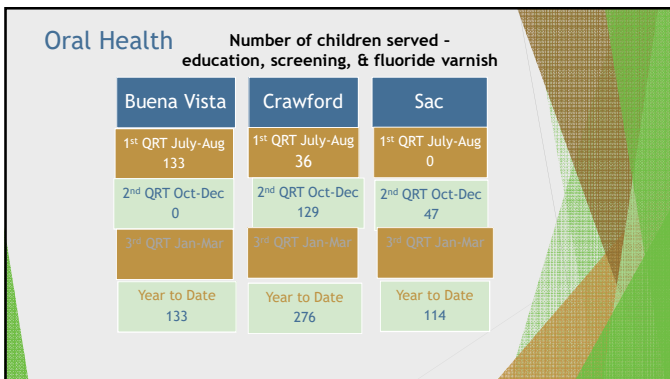
---

---

---

---

---




---

---

---

---

---

---

---

---

### Oral Health - Year to Date

- ❖ 523 Total children served, education, screening, fluoride varnish
- ❖ 63% Children screened for dental decay
- ❖ 17% Children referred for additional services
- ❖ 46% of the children referred that went to a dentist
- ❖ 83% cavity free

---

---

---

---

---

---

---

---

### Family STEPS

<p><b>Children</b></p> <ul style="list-style-type: none"> <li>• 151 - Served in the First Quarter July - August</li> <li>• 159 - Served in Second Quarter Oct - Dec</li> <li>• Served in Third Quarter Jan - March</li> </ul>	<p><b>Total Children:</b> Year To Date unduplicated: 178</p>
<p><b>Families</b></p> <ul style="list-style-type: none"> <li>• 103 - Served in the First Quarter July - August</li> <li>• 113 - Served in the Second Quarter from Oct - Dec</li> <li>• Served in the Third Jan - March</li> </ul>	<p><b>Total Families:</b> Year to Date unduplicated: 125</p>
<p><b>Home Visits</b></p> <ul style="list-style-type: none"> <li>• 405 - Home Visits in the First Quarter July - August</li> <li>• 419 - Home Visits in the Second Quarter Oct - Dec</li> <li>• Home Visits in the Third Quarter Jan-March</li> </ul>	<p><b>Total Home Visits:</b> Year to Date: 828</p>

---

---

---

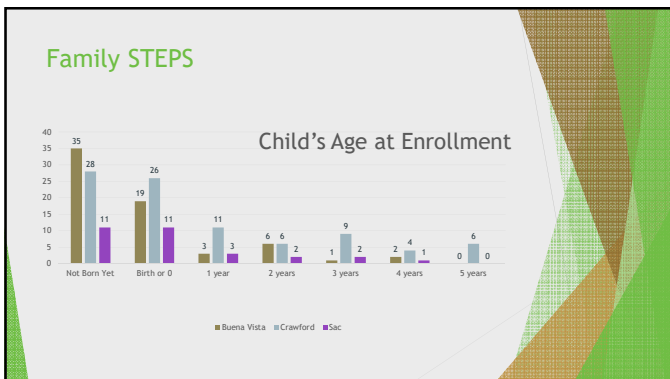
---

---

---

---

---




---

---

---

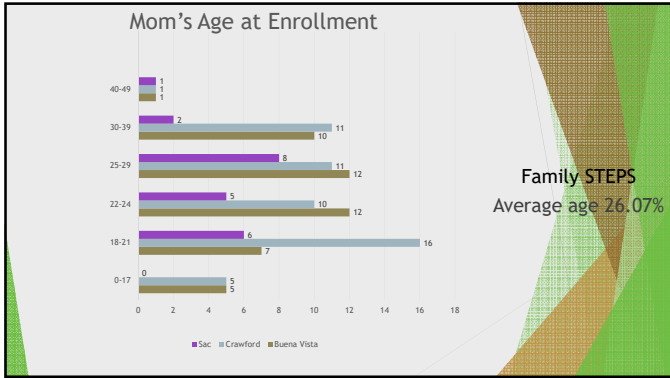
---

---

---

---

---




---

---

---

---

---

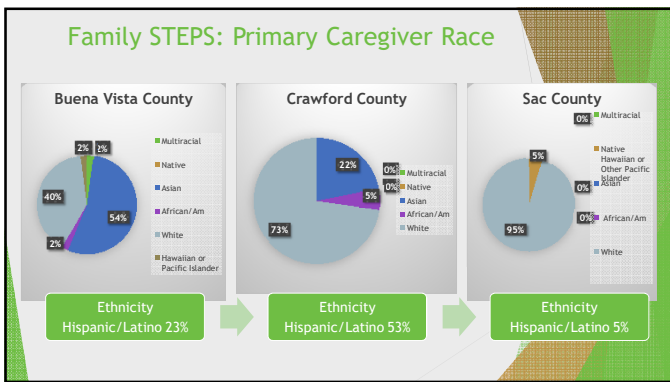
---

---

---

---

---




---

---

---

---

---

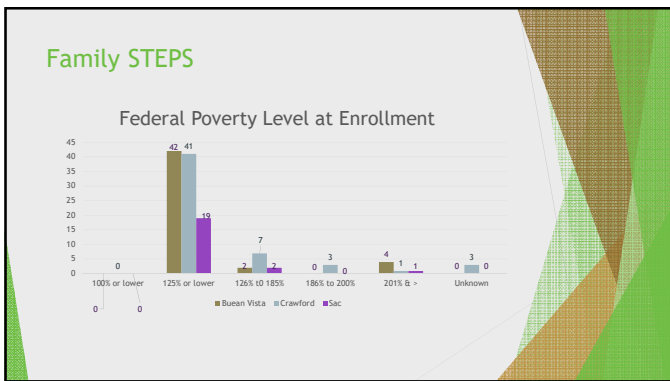
---

---

---

---

---




---

---

---

---

---

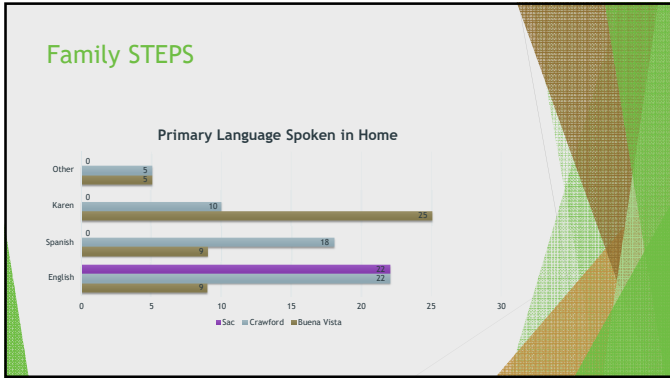
---

---

---

---

---




---

---

---

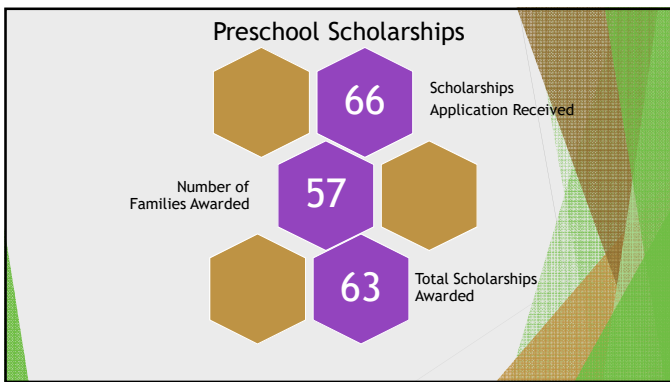
---

---

---

---

---




---

---

---

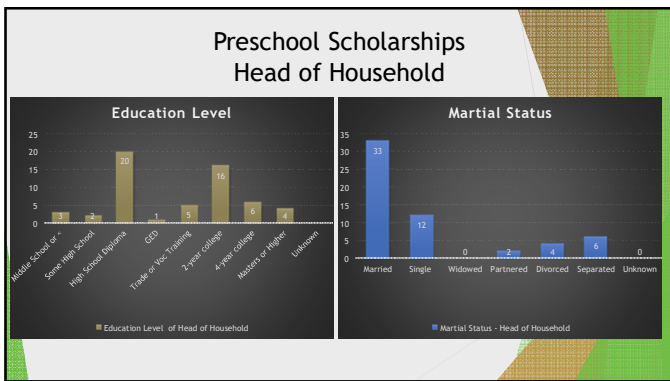
---

---

---

---

---




---

---

---

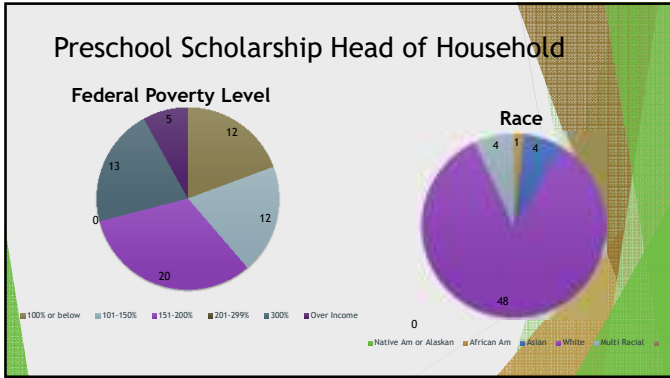
---

---

---

---

---



---

---

---

---

---

---

---

---